

The design of the rest facility of a park using Japan cedar thinner timber-2 杉間伐材を用いた公園の休憩施設の考案-2

2012.10.23

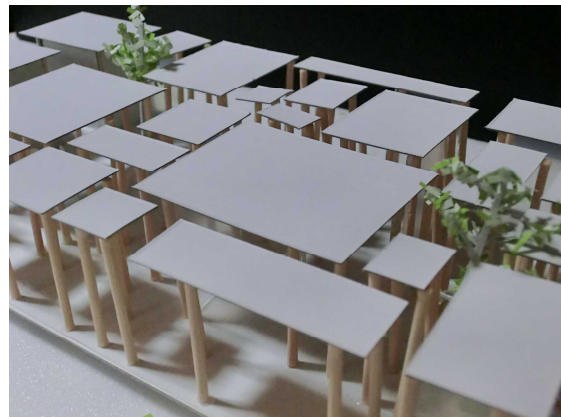
The building which harnessed thinner timber for the purpose of promotion of effective use of Japan cedar thinner timber is devised.

A roof is not put on the room but the room is decided by the roof.

The pillar supporting a roof is arranged at random.

Has the roof influenced [whether space is divided with the pillar, and] arrangement of a pillar?

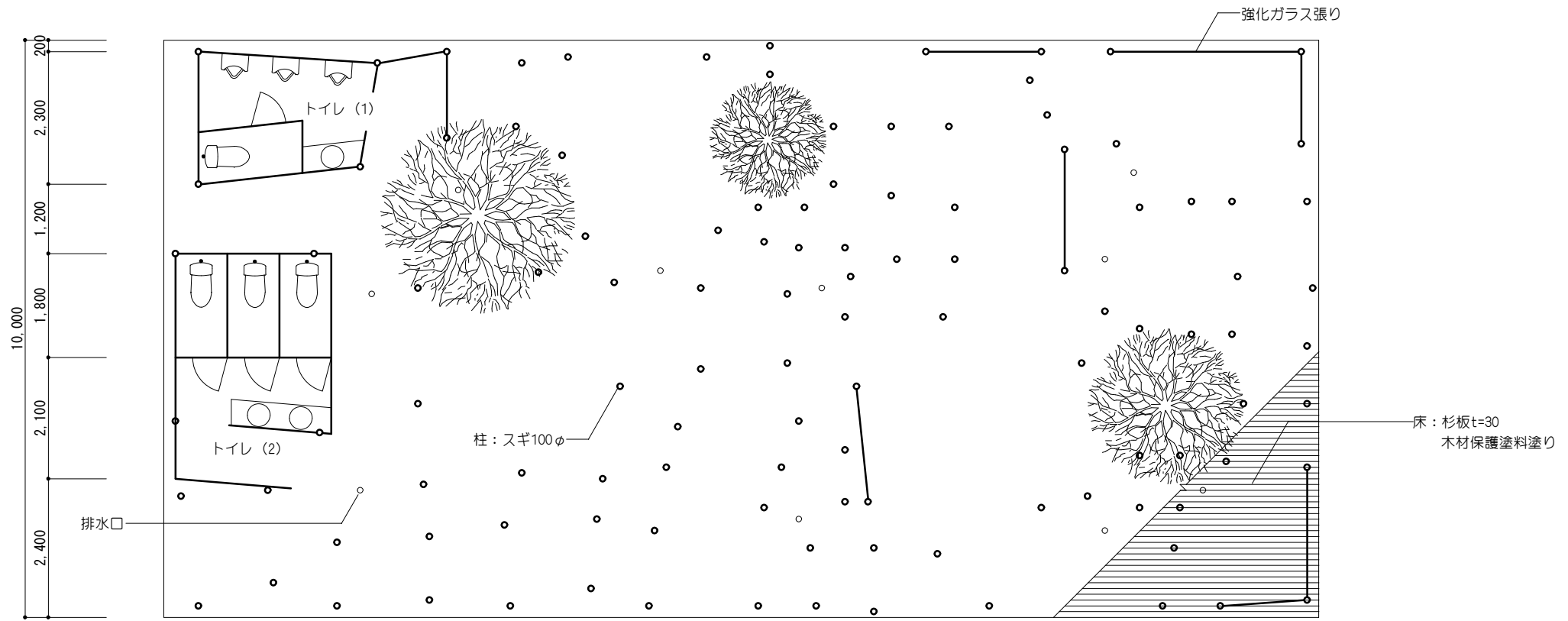
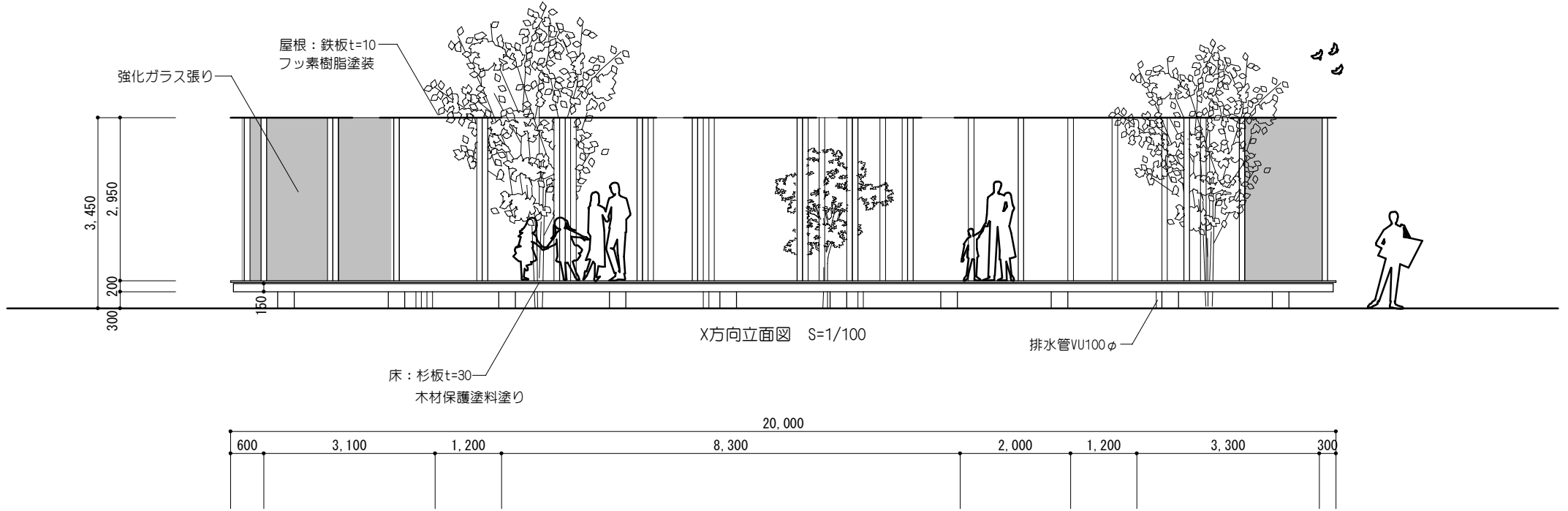
The space (room) of the purpose and scale which are demanded is arranged in the general building plan.

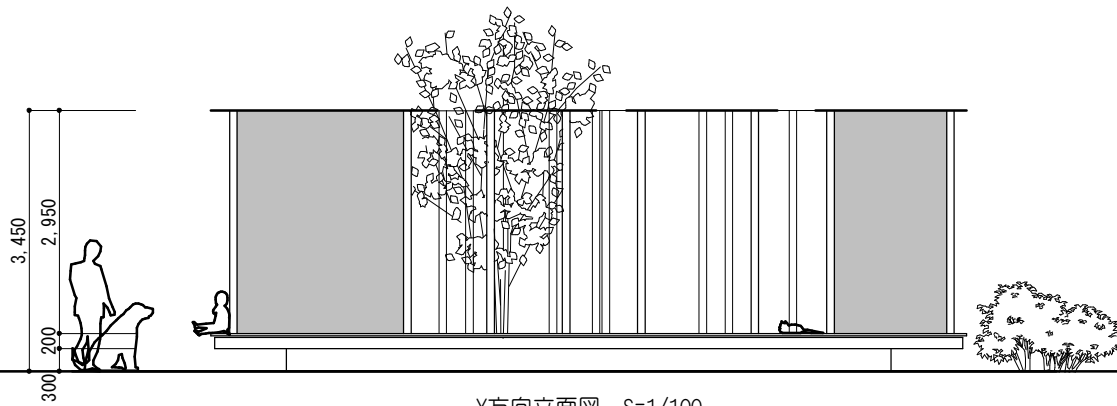


However, that is not right and the lower limit of a roof is decided in principle [minimum], it is arranging a roof freely and the floor wrapped in the roof appears. And a floor and a roof are connected and space is built with arranging the pillar supporting a roof.

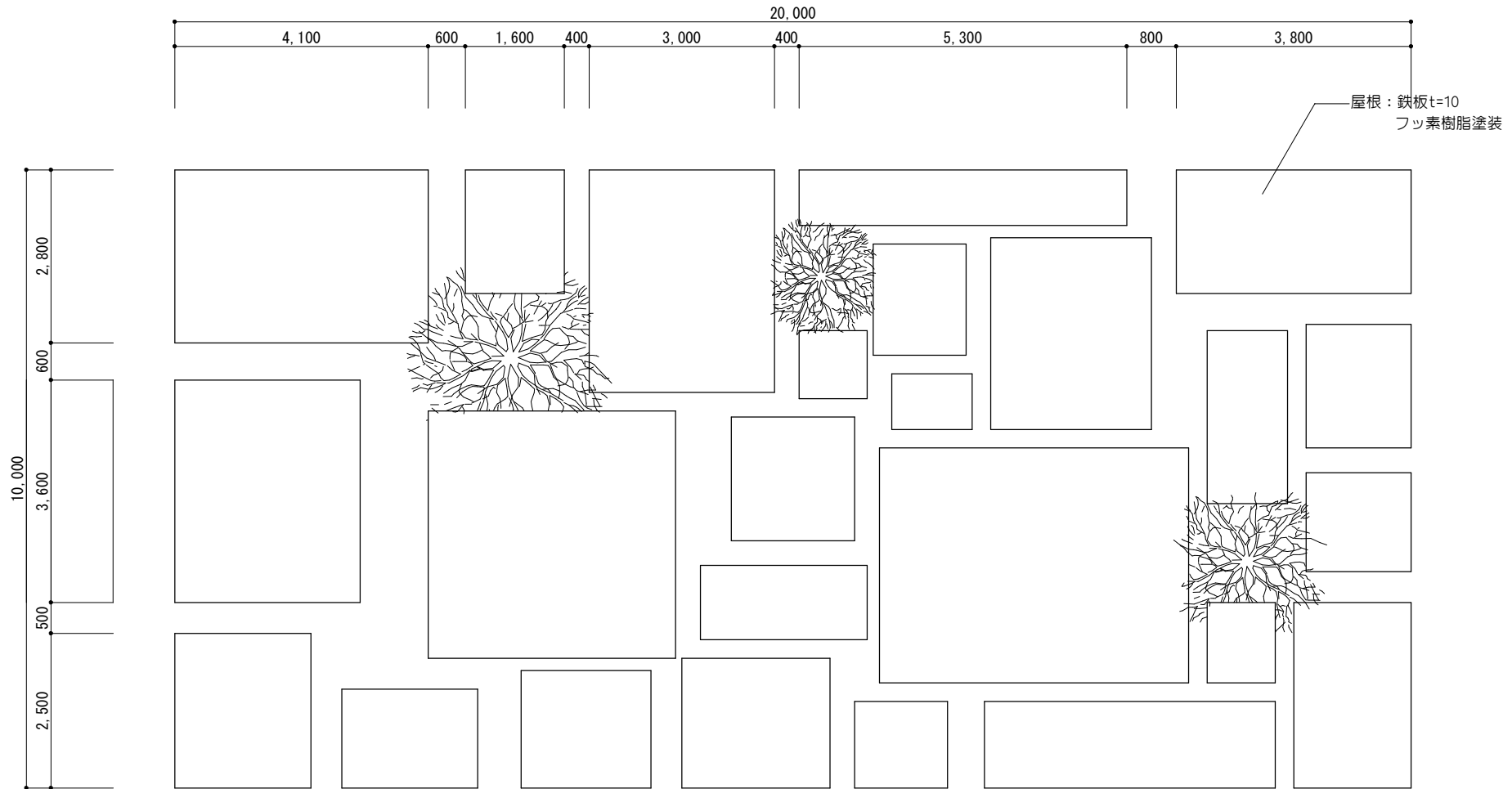
What kind of possibility does the space planned by the method completely opposite to the general building plan under which a floor and space are determined by the size and arrangement of a roof have?

By the given space, how to be used for a user is not forced but the user uses space freely himself.





Y方向立面図 S=1/100



屋根伏図 S=1/100

